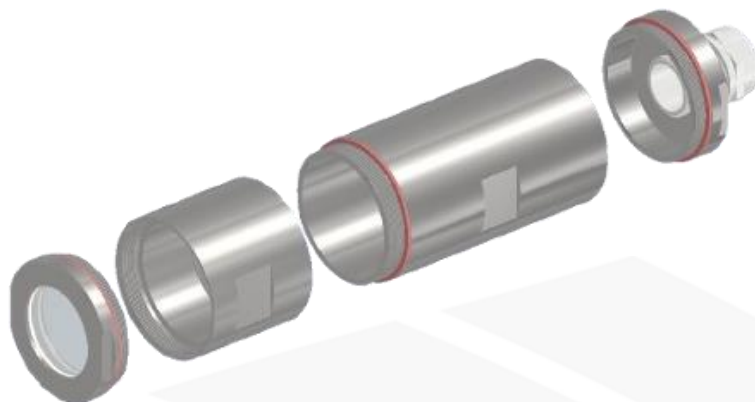


# Industrial Camera Cover CHS50

## User Manual v1



### Installation of the camera in the camera cover

#### 1) Removing the front part of the camera cover

The front part of the cover is removed by unscrewing the thread in the middle of the cover's body. You can use a 55 mm flat wrench in the prepared grooves.



Figure 1 – Removing the front part of the camera cover

#### 2) Mounting the camera

For mounting the camera inside the cover, use the mounting inserts, which together create a **spacer**, and the included screws.

Attach the fixed bottom part of the spacer to the camera. The camera is screwed only to the front 2 screws for proper centering inside the housing. **Do not use double-sided adhesive tape! This would break the thermal bridge and cause future poor heat dissipation from the camera.** If the mounting holes in the bottom part do not

match the mounting holes in the camera, drill new holes. We will happily prepare atypical mounting holes for you in advance if you share with us, which camera you plan to use.

After that, add the top part of the spacer with the screw A loose and insert the whole assembly into the cover. The ideal position is one in which the camera rests in the back side of the cover while the lens is extended out and accessible for further configuration after the whole cover is mounted.

The next step is to secure the camera in a stable position in the housing by screwing in **screw A** (see Figure 2 – Mounting the camera). The top spacer will open and apply firm pressure to fix the camera in the exact position and also ensure that the camera is properly heat dissipated into the body of the housing.



Figure 2 – Mounting the camera

### 3) Mounting the front of the camera cover

Before screwing back in the front part of the cover, make sure the lens is properly configured and in the right position. If it is extended too far, it might not fit the front part.

The front part is screwed back to the back part. If your application requires IP68 protection in submerged location, use 55 mm wrenches in the prepared grooves to tighten. **Use the reverse procedure when dismantling.**

## Connecting the cables

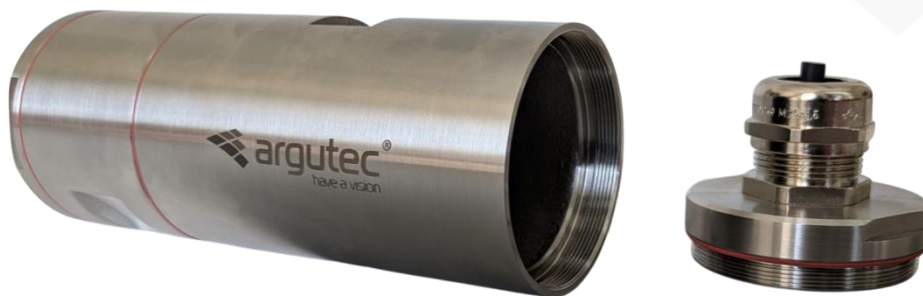


Figure 3 – Removing the back of the cover

The installation of the cables can be done by unscrewing and removing the rear part of the cover for easy access to the back of the camera. The standard cable gland seal allows installation of two 4-6 mm diameter cables. If you use only one cable, use the included blind insert in the second hole.

Attention! The Ø 6mm insert is longer than the seal itself. The Ø 6mm insert must be inserted at least 5 mm over the insert's edge on the both sides! Subsequently, it is necessary to tighten the nut of the cable gland as much as possible to allow for the deformation of the seal and proper sealing. **If the Ø 6mm insert does not protrude from both sides of the seal, over time it will be pushed out of the housing or into the housing and the IP protection will be violated!**

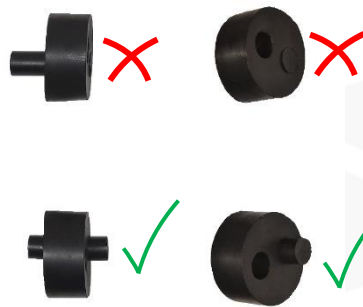


Figure 4- Correct and incorrect way of sealing the unused hole in the nut seal

#### How to install the cables:

- Unscrew the cable gland nut and thread it onto the cables.
- Connect the cables with the connectors to the camera and secure with the nut.
- Now you need to screw the rear face onto the rear profile of the housing first, as tightening the cable gland would cause rotation with the cables.
- Fit the cable gland seal, thread through the cable gland and insert into the cable gland.
- Tighten the gland nut with sufficient force to deform the seal and seal the cover properly.

### Lens adjustment

To adjust the aperture or focus of the lens, it is necessary to dismantle the front of the cover according to the procedure in chapter "Installation of the camera in the camera cover ". After adjusting the lens, reassemble the cover back.

### Mounting the cover using the mounting kit

You can use the included mounting kit to mount the entire cover in the desired location. This consists of a stainless steel bracket and two clips used to attach it to the body of the cover. Use the holes in the bottom of the console to install the cover at the application site. Thread the clips through the side holes of the bracket. Then place the camera cover on the bracket. Using a screwdriver, tighten the clips properly to secure the cover in the bracket.



Figure 5 – Mounting the cover using the mounting kit

## Maintenance

The cover is designed for industrial environments and its purpose is to protect the camera. The body of the cover does not need to be kept clean. Thanks to the steel design, the cover is also resistant to cleaning agents.

The cover glass must be kept clean for the camera to function properly. Blow off dust with compressed air or use a damp cloth. Prevent the glass from becoming dirty by positioning the cover properly when it is placed in operation.

## Repairs

Do not repair the cover or individual parts. Surface scratches do not affect the properties of the cover. If the cover, glass, or any of the seals is mechanically damaged, its protective properties will be lost. Do not use the damaged cover. In case of repair of the cover, contact the manufacturer.

## Disposal

Dangerous substances were not used during the production of the cover. Hand over the cover for disposal in a collection point for stainless steel waste.

## Technical specifications

Material properties	
<b>Body</b>	Stainless steel 1.4301 (DIN X5CrNi 18-10, AISI 304)
<b>Seal</b>	MVQ 85 for the body MVQ 60 FDA for the glass
<b>Glass</b>	N-BK7, antireflex coating MgF2 (transmittance 390~700 nm)
<b>Cable gland</b>	M25 Nickel-plated brass, NBR
<b>Mounting kit</b>	Stainless steel

Dimensions, Environment	
<b>External dimensions</b>	Ø 60 x 199 mm ± 2,5 mm incl. the cable gland
<b>Internal dimensions</b>	Ø 50 mm
<b>Window</b>	Ø 38 mm
<b>Protection class</b>	IP68, 5 bar
<b>Weight</b>	1,5 kg incl. the accessories (spacer, holder)

## Manufacturer, State of origin

Country of Origin: Czech Republic

Argutec, s.r.o.  
Na Nivách 1339/4  
700 30 Ostrava-Zábřeh  
Czech Republic

